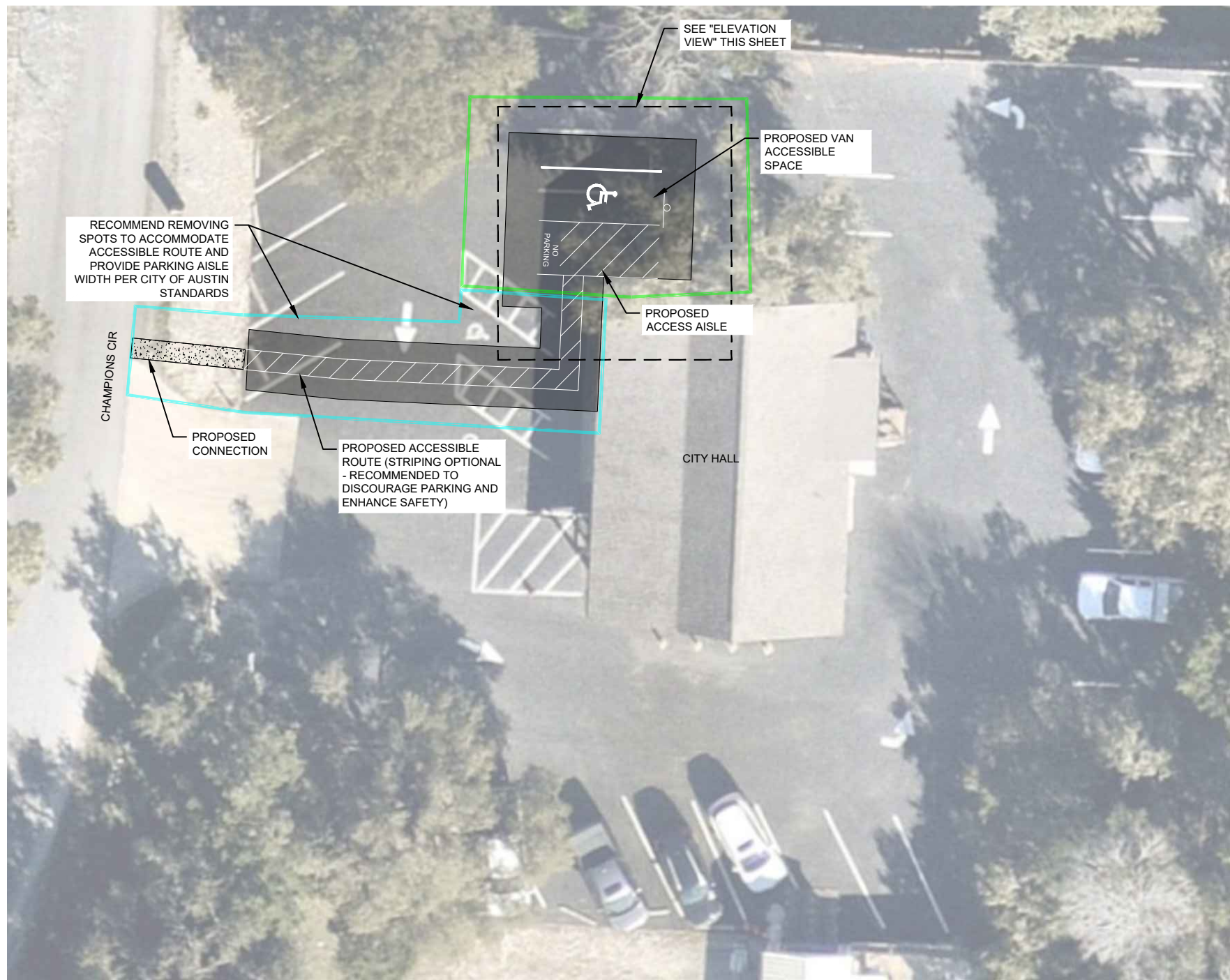
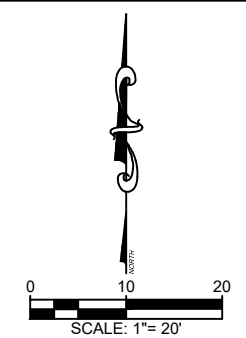


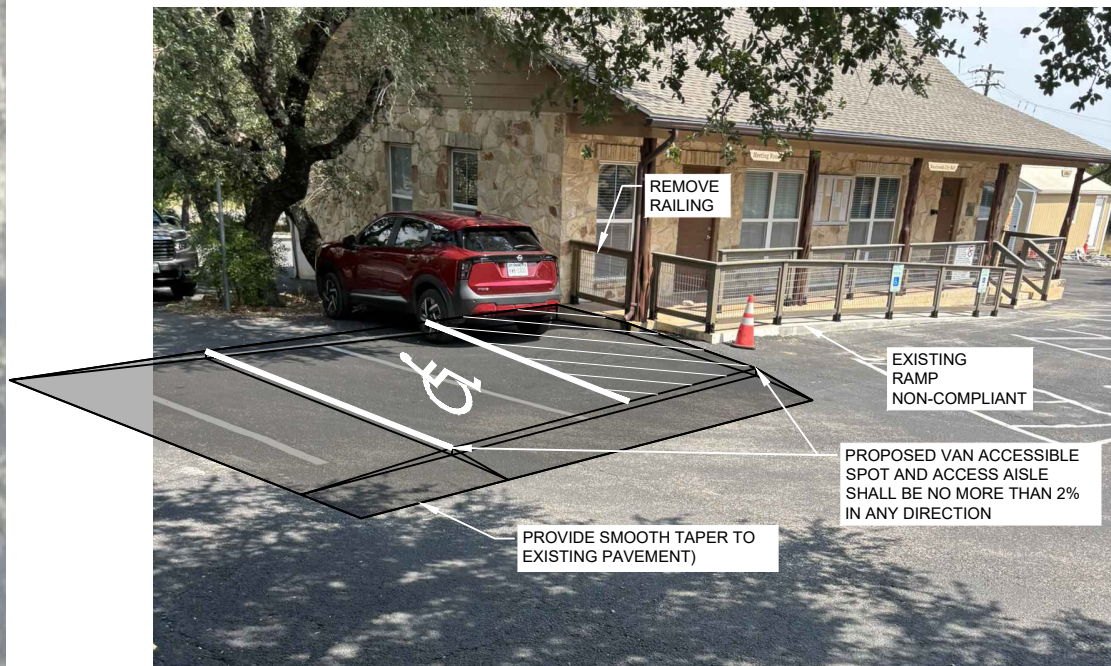
Date: Dec 04, 2025, 8:15am User ID: norri
 File: Z:\ENG - PHD\154 - City of Woodcreek\100 - TO 1 - GIS\20 - City Hall ADA Impv_CAD Exhibits\Prelim ADA Pkg Impv Exhibit.dwg



- LEGEND**
- ACCESS AISLE
 - CONCRETE
 - ASPHALT
 - "PARKING IMPROVEMENTS" AREA
 - "ACCESSIBLE ROUTE" AREA



NOTE: FTEG IS RELYING ON THE "EXISTING CONDITIONS ASSESSMENT COMPLETED - MAY 8, 2025" BY CONTOUR COLLECTIVE FOR NON-COMPLIANT ELEMENTS. FTEG HAS NOT COMPLETED A SURVEY AND THIS EXHIBIT IS FOR PRELIMINARY DESIGN USE ONLY.



ELEVATION VIEW
 NOT TO SCALE *INCOMPLETE ELEVATION VIEW, SHOWN FOR REFERENCE



EXAMPLE SITE - TAPERED PARKING SPACES

CITY OF AUSTIN SURFACE PARKING DIMENSIONS:

Angle of Parking (degrees)	Width of Stall	Depth of Stall 90° to Aisle	Width of Aisle		Module Width
			One Way	Two Way	
Standard Parking Stalls					
30	8 ft.—6 in.	16 ft.	12 ft.	-	Depth of Stall + Width of Aisle.
45	8 ft.—6 in.	17 ft.	14 ft.	-	
60	8 ft.—6 in.	18 ft. 6 in.	16 ft.	-	
75	8 ft.—6 in.	18 ft. 6 in.	18 ft.	-	
90	8 ft.—6 in.	17 ft. 6 in.	-	25 ft.	

Freeland Turk
 18830 FORTY SIX PKWY, BLDG 2, STE B (830) 438-0329
 SPRING BRANCH, TX 76070
 TBPE FIRM F-21047

THIS DOCUMENT IS RELEASED FOR THE PURPOSE OF REVIEW ONLY BY MELANIE NORRIS, P.E. LICENSE No. 140721 December 4, 2025 THIS DOCUMENT IS NOT TO BE USED FOR CONSTRUCTION BIDDING, OR PERMITTING PURPOSES

**CITY OF WOODCREEK
 CITY HALL ADA PARKING AND ACCESS
 PRELIMINARY EXHIBIT**

JOB:	XX
DATE:	XX
DRAWN:	XX PM: XX
DESIGN:	DM:
PEER:	OTHER:

REVISIONS:	
DELTA	DESCRIPTION

SHEET:
EX